

Family Capital: Intergenerational Wealth Management

May 22, 2025



Intergenerational Wealth Management

1. Introduction

Rob van Oostveen

2. 'Bringing the capital to the family'

Hans Molenaar

3. 'Bringing the family to the capital'

Maarten de Groot

4. Debate

Rob van Oostveen & Dennis Frankfort



The background of the image shows the silhouettes of a family walking away from the viewer towards a bright, hazy sunset. There are three figures: a small child on the left, a tall adult in the center, and another adult on the right. They are all holding hands. The scene is bathed in a warm, golden light from the setting sun, creating a soft, out-of-focus background with some foliage visible on the right.

Families
are different

(because they
are family)

Families think in generations

- Leading to a long time horizon
- Creating challenges in terms of succession and education



Family members can have multiple roles

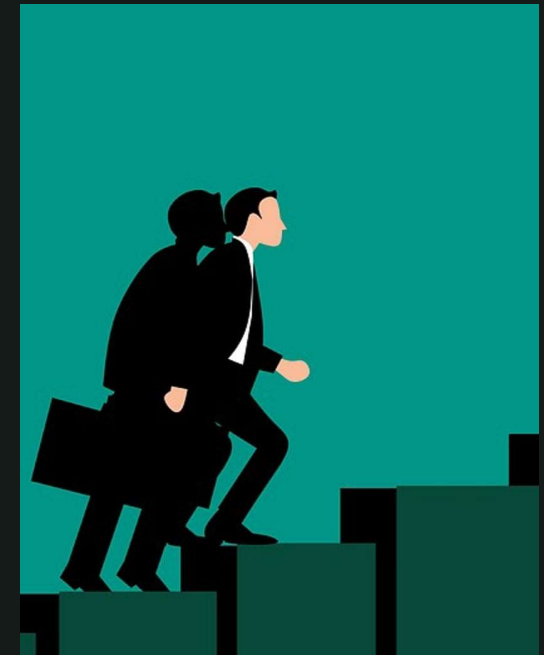
Family



Owner

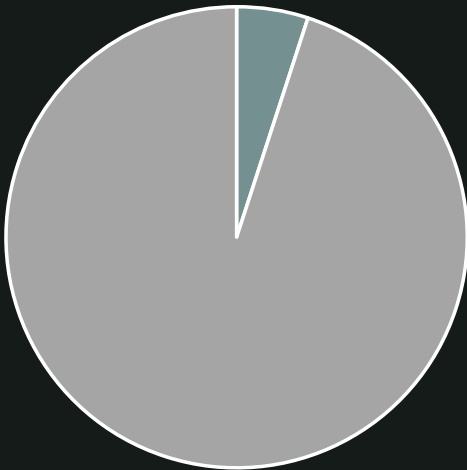


Employee

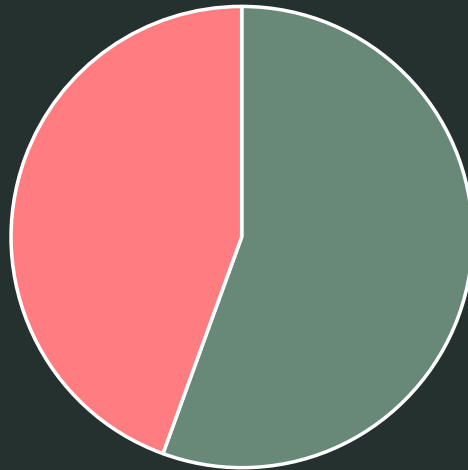


Families make decisions differently

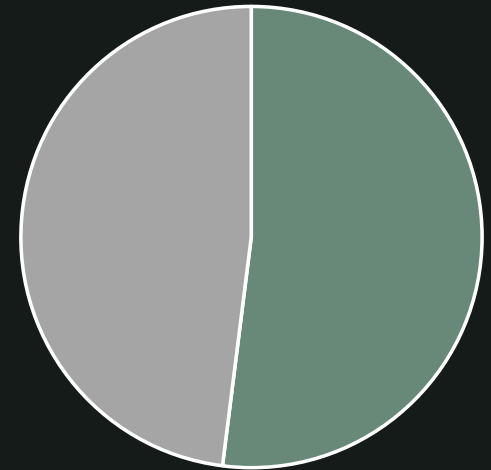
Company:
by mandate



Democracy:
by majority



Family:
by consensus



‘Bringing the family
to the capital’

Maarten de Groot



‘Bringing the capital
to the family’

Hans Molenaar

